



KULDIGA OLD TOWN IN THE PRIMEVAL VALLEY OF THE RIVER VENTA





An aerial photograph of a town, likely Kuldīga, showing a river flowing through it. A bridge is visible on the left side of the river. The town is characterized by a dense cluster of buildings with red-tiled roofs, surrounded by green trees. The surrounding area is mostly grey, indicating a different urban planning structure or a different part of the town.

URBAN PLANNING

THE AUTHENTICITY OF THE URBAN PLANNING STRUCTURE IS OBVIOUS. THE HISTORICAL CENTRE OF KULDIGA BEGAN TO DEVELOP ALREADY IN THE 13TH CENTURY AND IT HAS PRESERVED PLANNING ELEMENTS FROM THE 13TH TO 19TH CENTURY.

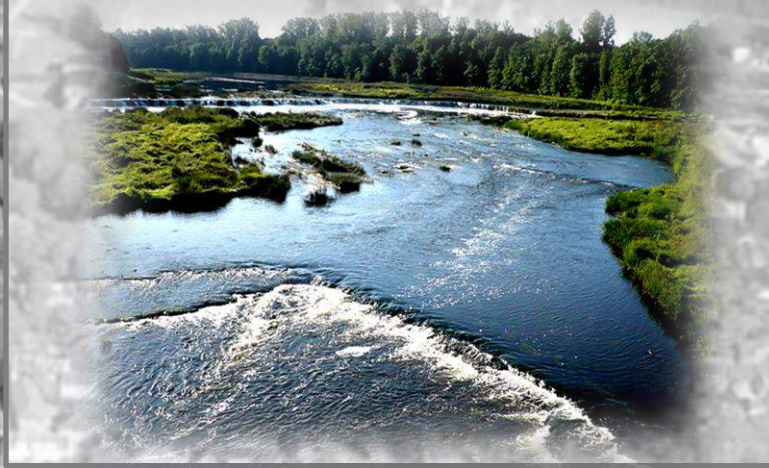
HISTORICAL BUILDINGS ALONG THE RIVER ALEX



**THE HOUSES BUILT ON THE BANKS OF
THE RIVER ALEKSUPITE ARE PECULIAR
WITH THEIR STONE FOUNDATIONS
BUILT ON THE SLOPE. THE WOODEN
BUILDINGS ARE BUILT AT THE END OF
THE 17TH, 18TH CENTURY OR IN THE
19TH CENTURY.**



THE RIVER VENTA



**THE RIVER VENTA FORMS UP TO
15 M DEEP VALLEY IN THE
VICINITY OF KULDIGA**



VENTA WATERFALL



**VENTA WATERFALL IS A
SIGNIFICANT GEOLOGIC-
GEOMORPHOLOGIC OBJECT IN
THE VALLEY OF THE RIVER
VENTA. THE HEIGHT OF IT VARIES
FROM 1,8 M TO 2,2 M. THE
WIDTH OF THE WATERFALL
REACHES 249 M IN SUMMER
TIME.**

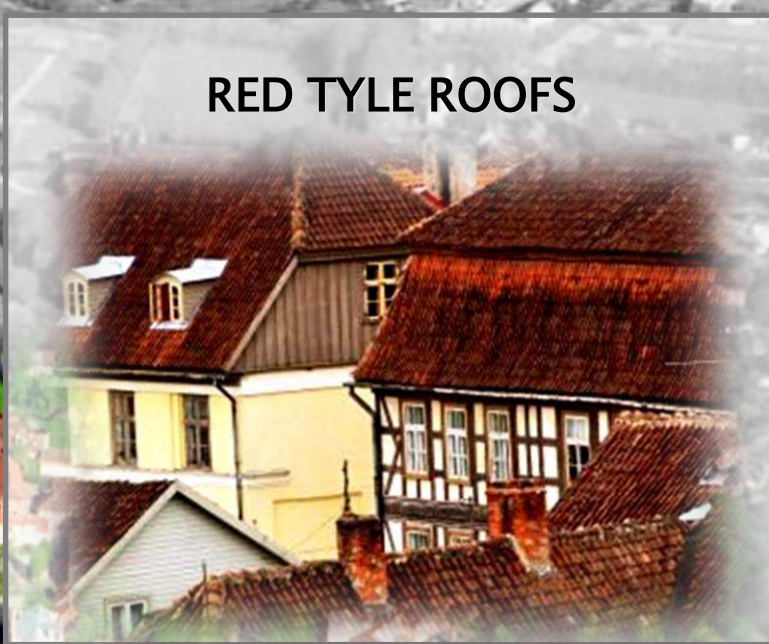
THE ANCIENT BRICK BRIDGE



ACROSS THE RIVER VENTA BUILT
IN 1874 LIES ONE OF THE
LONGEST BRICK BRIDGES IN
EUROPE, CONSTRUCTED
ACCORDING TO THE
STANDARDS OF THE 19TH
CENTURY



RED TYLE ROOFS



**THE BUILDINGS HAVE TYLE
ROOFS**

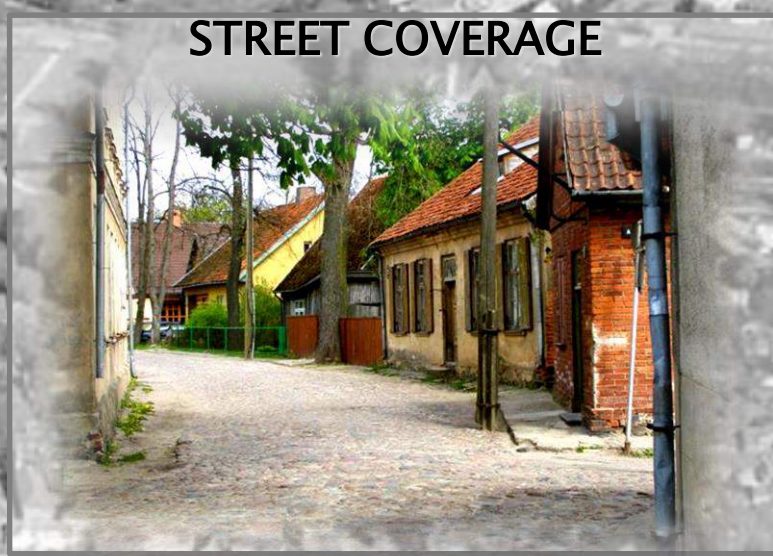
ELEMENTS



DOORS ARE RICH IN ORNAMENTS, WITH CARVED PIVOTS AND HANDLES, ABOVE THE DOORS – GLASS WINDOWS FOR LANTERNS.



STREET COVERAGE



THE STREET COVERAGE WITH
ROUND STONES IS ALSO
GENUINE.



PUBLIC OPEN SPACE

- **STREETS, BRIDGES AND SQUARES;**
- **PARKS AND GREENERIES;**
- **PUBLIC BUILDINGS AND THEIR SURROUNDINGS;**
- **RIVER VALLEY – RIVER, BANKS, BEACH AND ISLANDS**





- Researches
- Planning documents
- Involment of residents
- Support: financial, practical (RESTORATION CENTRE)
- Control (BUILDING DEPARTMENT)NT)

THE OLD TOWN IN THE PRIMEVAL VALLEY OF THE RIVER VENTA – JOINT CULTURAL AND NATURAL HERITAGE



THE BLUE FLAG BEACH
NATURA 2000
HISTORICAL CENTRE



LANDSCAPE PLAN FOR THE LAMPREY
FISHING IN THE RIVER VENTA IN
KULDIGA TOWN:
THE AUTHOR: MĀRA URTĀNE. 2013



URBAN SPACE DESIGN AND ACCESSIBILITY MAINTENANCE / RENEWAL / CREATION



DEVELOPMENT AND IMPLEMENTATION OF THE GUIDELINES FOR CREATING A HARMONIZED PUBLIC SPACE AND DESIGN IN HISTORICAL TOWN IN KULDIGA

- GREENERIES – PARKS, SQUARES, PLANTS IN POTS;
- COVERAGE OF STREETS AND SQUARES;
- ACCESSIBILITY;
- ADVERTISEMENTS;
- TRADITIONAL MAINTENANCE AND RENOVATION OF HISTORICAL BUILDINGS;
- USAGE OF RIVER AND NATURE TERRITORIES;
- PAINTING SOLUTIONS FOR HISTORICAL BUILDINGS;



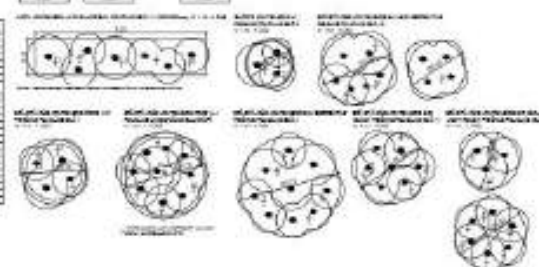
CULTURAL LANDSCAPE – ELEMENTS – DETAILS



CREATING A HOLISTIC APPROACH

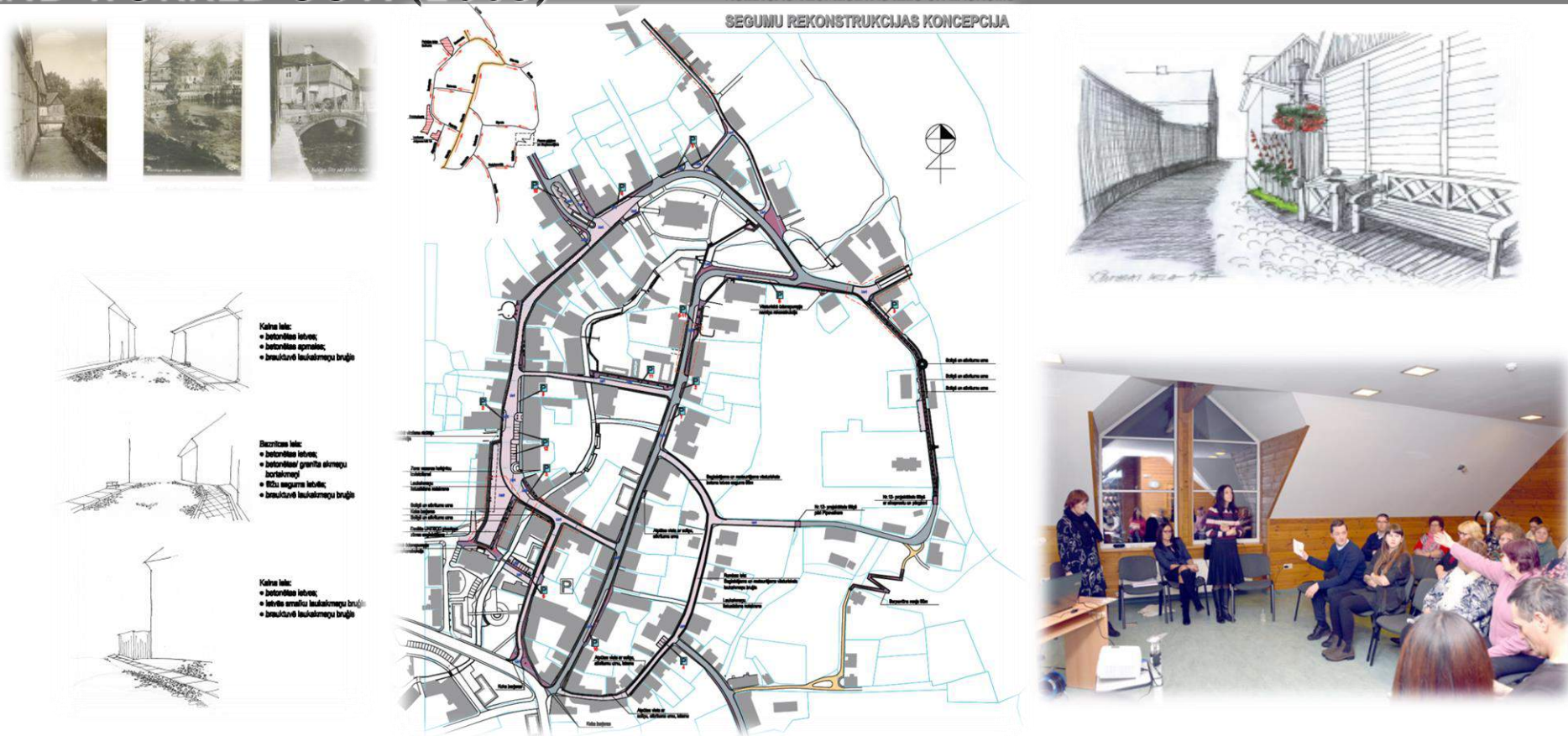


Category	Item	Unit	Price	Quantity	Total
Furniture	Office Chair	1	150.00	1	150.00
	Desk	1	200.00	1	200.00
Electronics	Computer Monitor	1	120.00	1	120.00
	Printer	1	80.00	1	80.00
Supplies	Paper	100	0.50	100	50.00
	Ink	1	10.00	1	10.00
Services	IT Support	1	100.00	1	100.00
	Consulting	1	250.00	1	250.00
Travel	Hotel	1	150.00	1	150.00
	Transportation	1	50.00	1	50.00
Food & Beverage	Restaurant	1	100.00	1	100.00
	Coffee Shop	1	50.00	1	50.00
Miscellaneous	Postage	1	10.00	1	10.00
	Insurance	1	100.00	1	100.00



1. CONCEPT OF STREETS IN OLD TOWN OF KULDIGA AND RECONSTRUCTION OF SQUARE COVERAGE AND ALEKSHA RIVER PROMENADE

BY INVESTIGATION OF HISTORICAL PHOTO FIXATIONS AND EXAMPLES IN THE NATURE, COMMON SOLUTIONS TO RENOVATE STREET COVERAGE IN STYLE OF BEGINNING OF THE 20TH CENTURY HAVE BEEN ANALYZED AND WORKED OUT. (2009)





REKLĀMAS STABS

REKLĀMAS STABS

ESOŠS ŪDENS PUMPTIS

APALĀIS BRUGAKMENS

DEKORATĪVI APSTĀDĪJUMI

PĀRSTĀDĀMI KOKAUGI

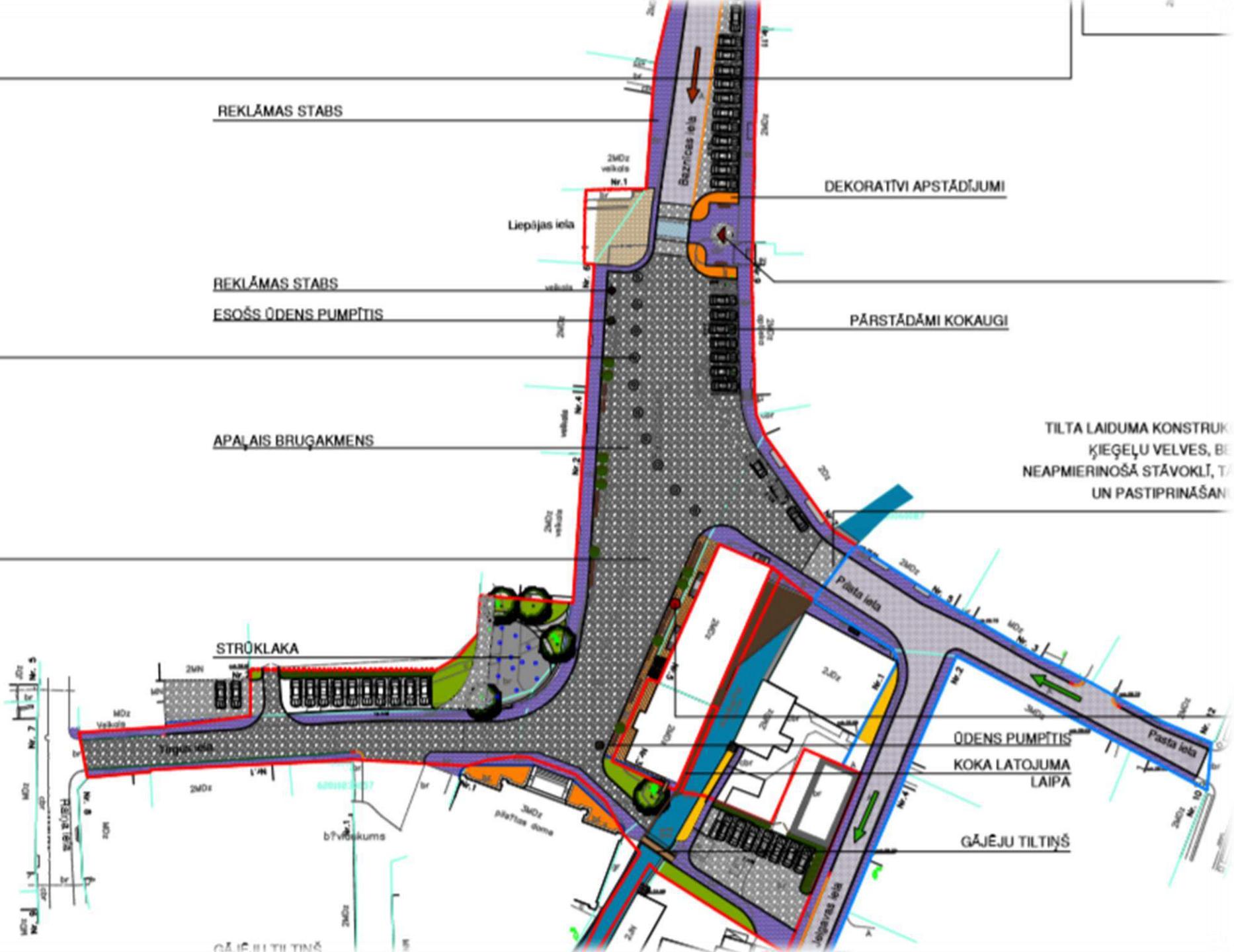
TILTA LAIDUMA KONSTRUKCIJA
KĪĒĢĒĻU VELVES, BE
NEAPMIERINOŠĀ STĀVOKLĪ, T
UN PASTIPRINĀŠANĀ

STRŪKLAKA

ŪDENS PUMPTIS
KOKA LATOJUMA
LAIPA

GAJĒJU TILTINŠ

GAJĒJU TILTINŠ







Kuldīga. Pilsētas valde.



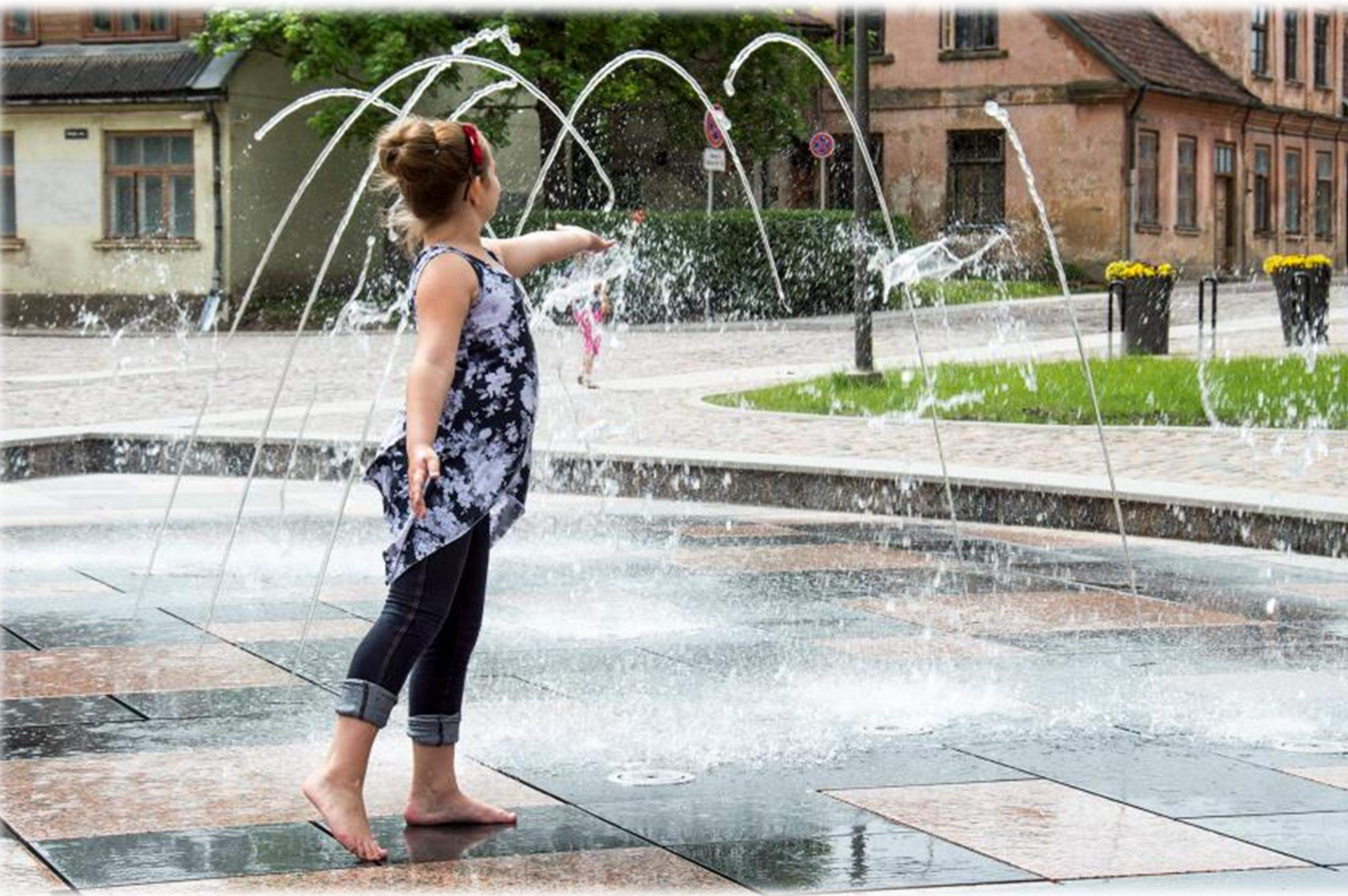












2. GREENERIES CONCEPT

Architectural plan and photographs of existing buildings, accompanied by a table of data and diagrams illustrating the greeneries concept.

NO.	NAME	ADDRESS	DATE	STATUS	REMARKS
1
2
3
4
5
6
7
8
9
10
11
12
13
14
15
16
17
18
19
20
21
22
23
24
25
26
27
28
29
30
31
32
33
34
35
36
37
38
39
40
41
42
43
44
45
46
47
48
49
50

Diagrams illustrating the greeneries concept, showing various plant arrangements and structural details.



1. KÖRNYÉK



2. KÖRNYÉK



3. KÖRNYÉK



4. KÖRNYÉK



5. KÖRNYÉK



6. KÖRNYÉK



7. KÖRNYÉK



8. KÖRNYÉK



9. KÖRNYÉK



10. KÖRNYÉK



11. KÖRNYÉK



12. KÖRNYÉK



13. KÖRNYÉK



14. KÖRNYÉK



15. KÖRNYÉK



16. KÖRNYÉK



17. KÖRNYÉK



18. KÖRNYÉK



19. KÖRNYÉK

20. KÖRNYÉK

21. KÖRNYÉK

22. KÖRNYÉK

23. KÖRNYÉK

24. KÖRNYÉK

25. KÖRNYÉK

26. KÖRNYÉK

27. KÖRNYÉK

28. KÖRNYÉK

29. KÖRNYÉK

30. KÖRNYÉK

31. KÖRNYÉK

32. KÖRNYÉK

33. KÖRNYÉK

34. KÖRNYÉK

35. KÖRNYÉK

36. KÖRNYÉK

37. KÖRNYÉK

38. KÖRNYÉK

39. KÖRNYÉK

40. KÖRNYÉK

41. KÖRNYÉK

42. KÖRNYÉK

43. KÖRNYÉK

44. KÖRNYÉK

45. KÖRNYÉK

46. KÖRNYÉK

47. KÖRNYÉK

48. KÖRNYÉK

49. KÖRNYÉK

50. KÖRNYÉK

51. KÖRNYÉK

52. KÖRNYÉK

53. KÖRNYÉK

54. KÖRNYÉK

55. KÖRNYÉK

56. KÖRNYÉK

57. KÖRNYÉK

58. KÖRNYÉK

59. KÖRNYÉK

60. KÖRNYÉK

61. KÖRNYÉK

62. KÖRNYÉK

63. KÖRNYÉK

64. KÖRNYÉK

65. KÖRNYÉK

66. KÖRNYÉK

67. KÖRNYÉK

68. KÖRNYÉK

69. KÖRNYÉK

70. KÖRNYÉK

71. KÖRNYÉK

72. KÖRNYÉK

73. KÖRNYÉK

74. KÖRNYÉK

75. KÖRNYÉK

76. KÖRNYÉK

77. KÖRNYÉK

78. KÖRNYÉK

79. KÖRNYÉK

80. KÖRNYÉK

81. KÖRNYÉK

82. KÖRNYÉK

83. KÖRNYÉK

84. KÖRNYÉK

85. KÖRNYÉK

86. KÖRNYÉK

87. KÖRNYÉK

88. KÖRNYÉK

89. KÖRNYÉK

90. KÖRNYÉK

91. KÖRNYÉK

92. KÖRNYÉK

93. KÖRNYÉK

94. KÖRNYÉK

95. KÖRNYÉK

96. KÖRNYÉK

97. KÖRNYÉK

98. KÖRNYÉK

99. KÖRNYÉK

100. KÖRNYÉK

101. KÖRNYÉK

102. KÖRNYÉK

103. KÖRNYÉK

104. KÖRNYÉK

105. KÖRNYÉK

106. KÖRNYÉK

107. KÖRNYÉK

108. KÖRNYÉK

109. KÖRNYÉK

110. KÖRNYÉK

111. KÖRNYÉK

112. KÖRNYÉK

113. KÖRNYÉK

114. KÖRNYÉK

115. KÖRNYÉK

116. KÖRNYÉK

117. KÖRNYÉK

118. KÖRNYÉK

119. KÖRNYÉK

120. KÖRNYÉK

121. KÖRNYÉK

122. KÖRNYÉK

123. KÖRNYÉK

124. KÖRNYÉK

125. KÖRNYÉK

126. KÖRNYÉK

127. KÖRNYÉK

128. KÖRNYÉK

129. KÖRNYÉK

130. KÖRNYÉK

131. KÖRNYÉK

132. KÖRNYÉK

133. KÖRNYÉK

134. KÖRNYÉK

135. KÖRNYÉK

136. KÖRNYÉK

137. KÖRNYÉK

138. KÖRNYÉK

139. KÖRNYÉK

140. KÖRNYÉK

141. KÖRNYÉK

142. KÖRNYÉK

143. KÖRNYÉK

144. KÖRNYÉK

145. KÖRNYÉK

146. KÖRNYÉK

147. KÖRNYÉK

148. KÖRNYÉK

149. KÖRNYÉK

150. KÖRNYÉK

151. KÖRNYÉK

152. KÖRNYÉK

153. KÖRNYÉK

154. KÖRNYÉK

155. KÖRNYÉK

156. KÖRNYÉK

157. KÖRNYÉK

158. KÖRNYÉK

159. KÖRNYÉK

160. KÖRNYÉK

161. KÖRNYÉK

162. KÖRNYÉK

163. KÖRNYÉK

164. KÖRNYÉK

165. KÖRNYÉK

166. KÖRNYÉK

167. KÖRNYÉK

168. KÖRNYÉK

169. KÖRNYÉK

170. KÖRNYÉK

171. KÖRNYÉK

172. KÖRNYÉK

173. KÖRNYÉK

174. KÖRNYÉK

175. KÖRNYÉK

176. KÖRNYÉK

177. KÖRNYÉK

178. KÖRNYÉK

179. KÖRNYÉK

180. KÖRNYÉK

181. KÖRNYÉK

182. KÖRNYÉK

183. KÖRNYÉK

184. KÖRNYÉK

185. KÖRNYÉK

186. KÖRNYÉK

187. KÖRNYÉK

188. KÖRNYÉK

189. KÖRNYÉK

190. KÖRNYÉK

191. KÖRNYÉK

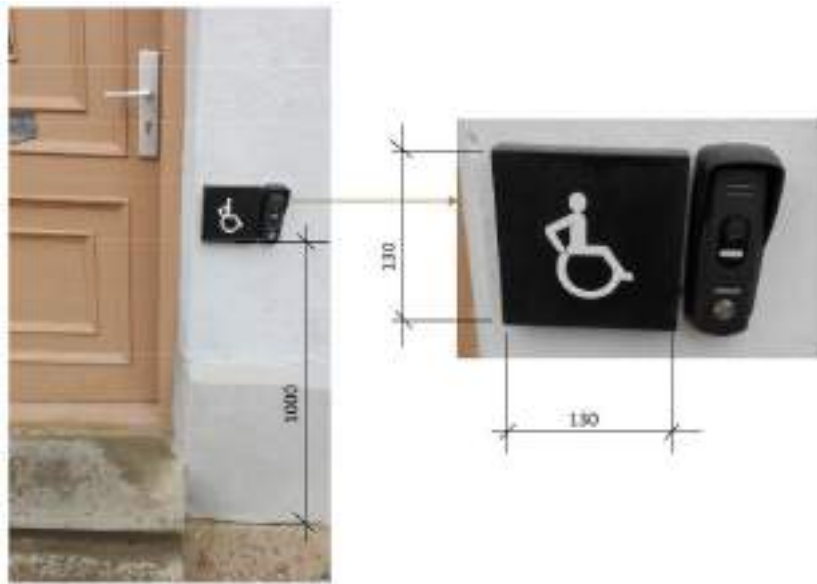
192. KÖRNYÉK

3. ACCESSIBILITY GUIDELINES IN HISTORICAL ENVIRONMENT



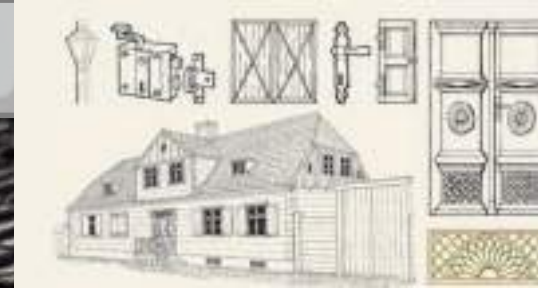
Special events aimed to provide available city environment for limited mobility groups, using unified design elements on public street spaces in the historical centre of Kuldīga (Latvia)





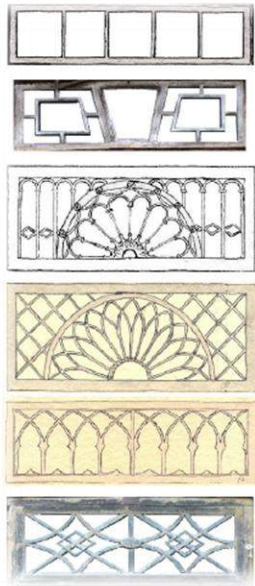
Interaction of the past and future has a direct bearing on a subject of the real research. Our research is devoted to questions of the adaptation of historic center and the city in general for the maximum comfort of disabled people and other few mobile inhabitants of Kuldiga, and for its numerous guests, tourists visiting the city.

4. TRADITIONAL BUILDING METHODS

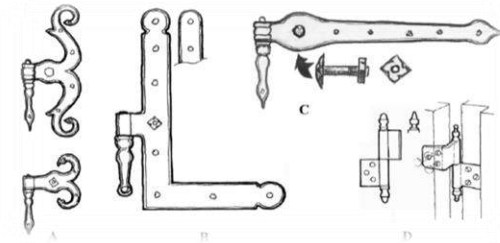
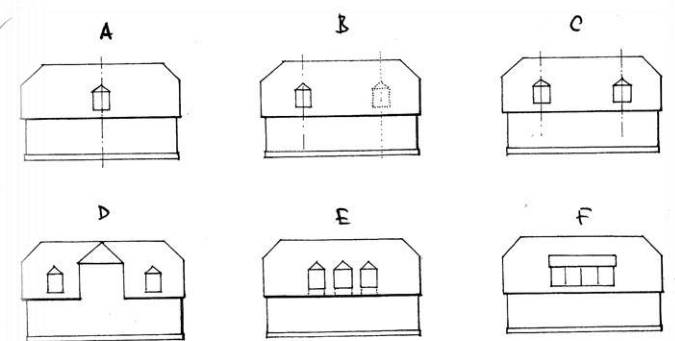
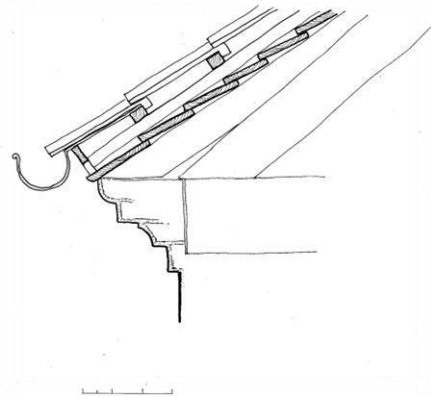
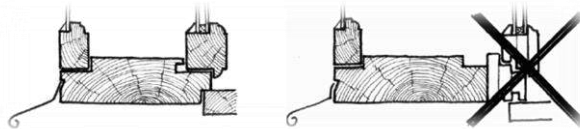
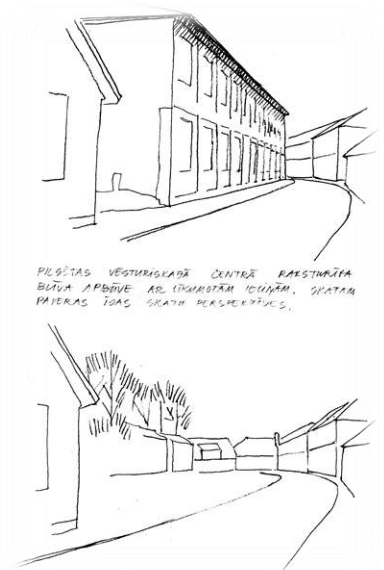
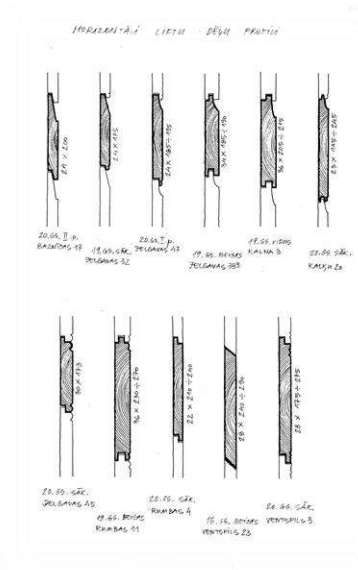
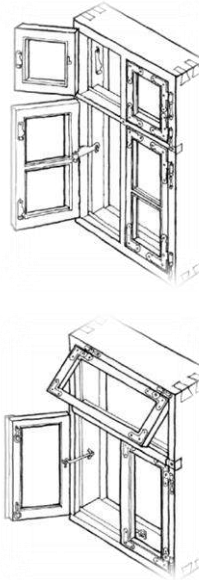
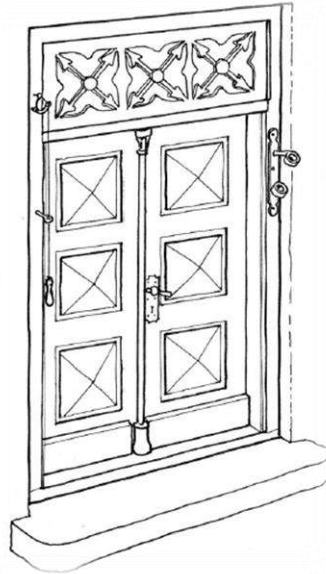


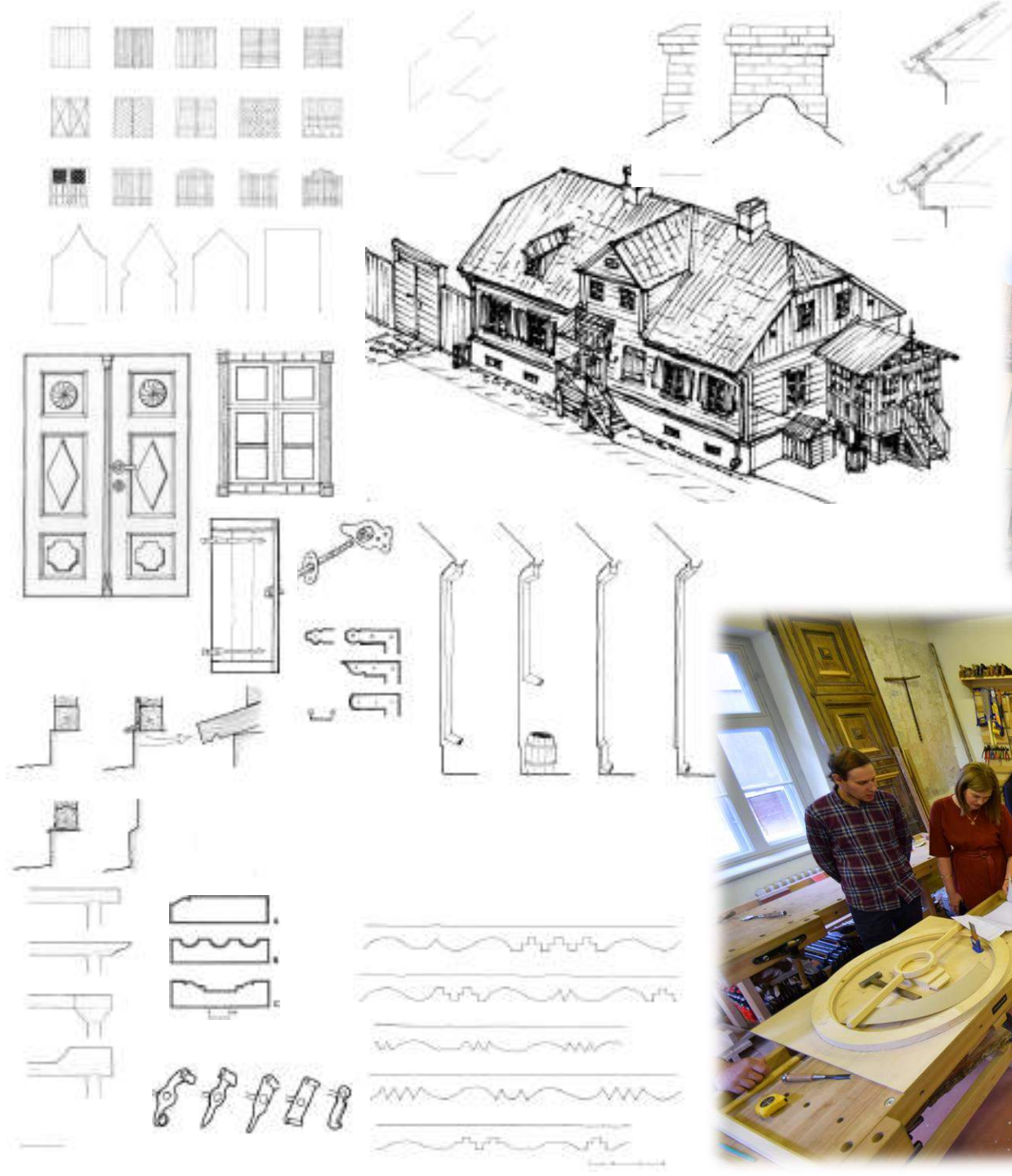


VISUALIZATION OF TRADITIONAL CONSTRUCTION AND DETAILS IN KULDIGA



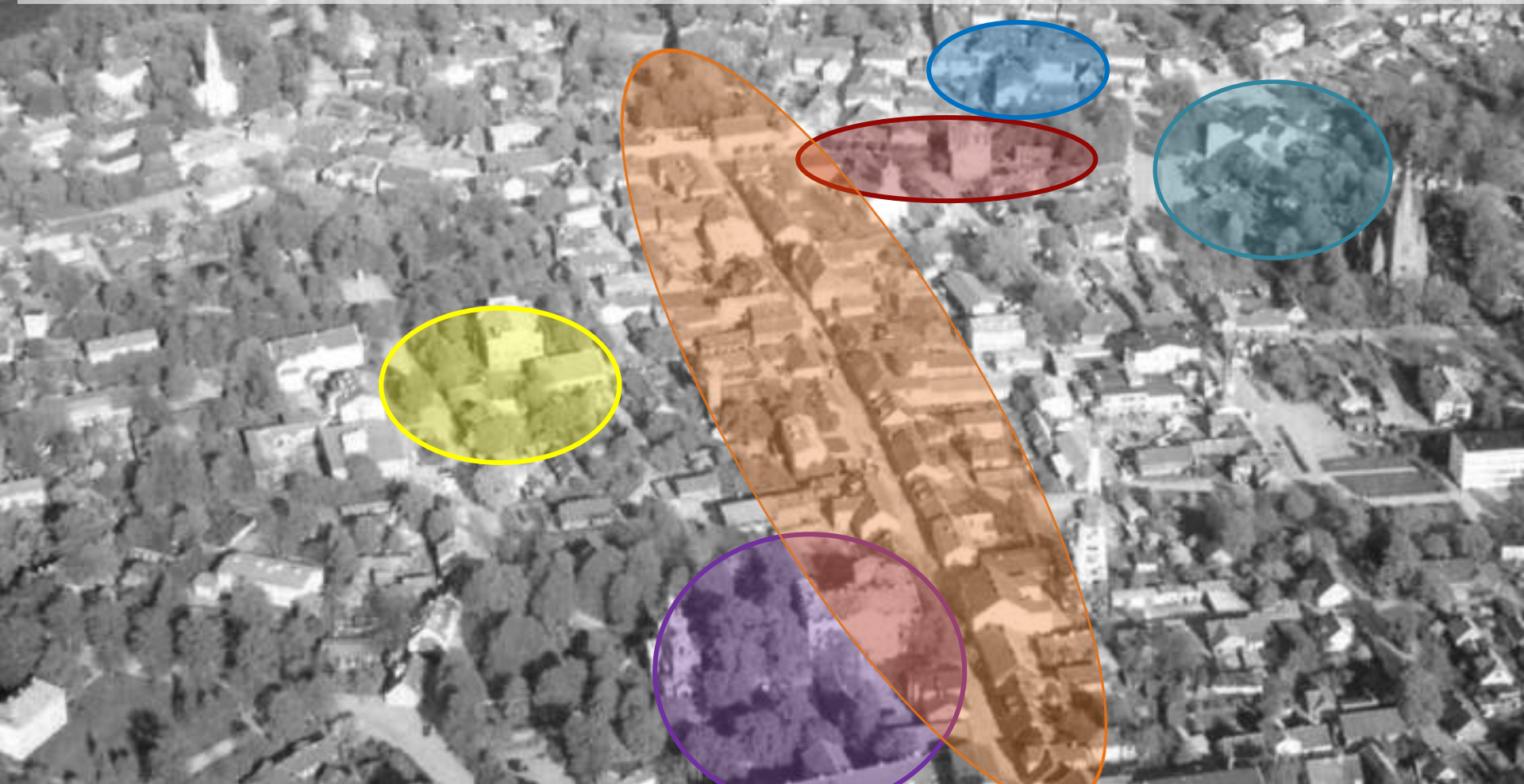
A
B
C
D
E
F

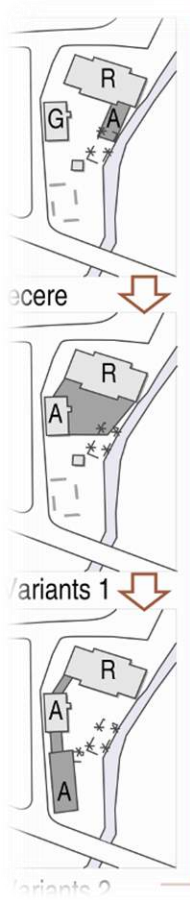




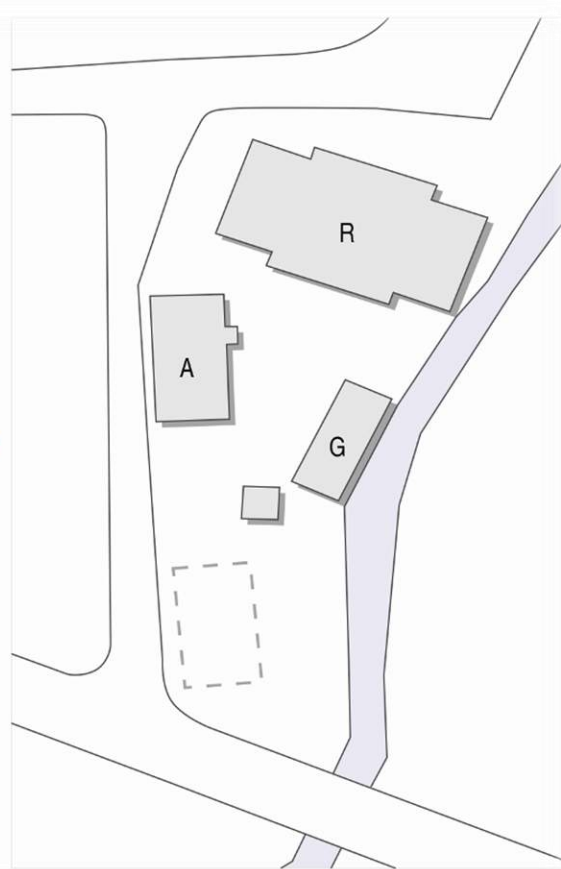
Historical town centres being renovated in accordance with clearly defined conditions:

- renovation of a part of the cultural and historical town and adjusting it to the human lifestyle in the 21st century
- Kuldīga experience in renovating urban environment – creation and evaluation the environment in the context, each development idea is part of the common, extensive cultural landscape both in possibilities and conditions

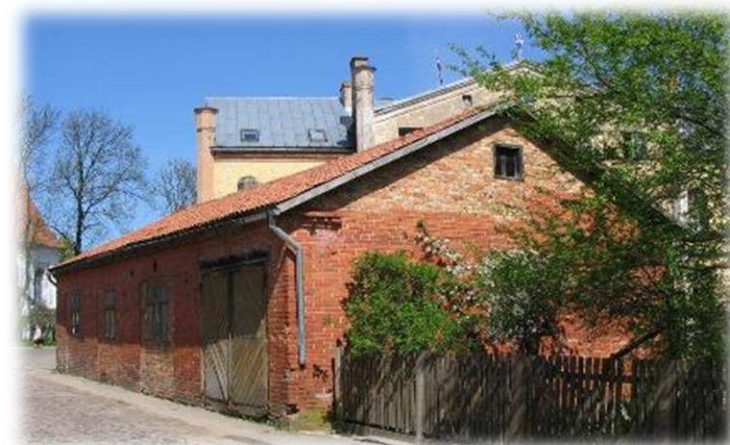




- R - Rātsnams
- A - papildus administratīvās telpas
- G - autotransportu garāža
- - plānotas piebūves
- - zudušās apbūves vieta
- x--- - demontēt paredzētais apjoms



Rezultāts





Object ideas, concepts un detailed elaboration





2011



1994



2018



Building at 2 Skolas Street

Kuldīga Technology and Tourism Technical College – construction project



2000



2018



INFORMATION, ENQUIRIES, INVOLVEMENT



LIVE LANDSCAPE – TRADITIONS AND CREATION



An aerial photograph of a town, likely Gada-Balva, showing a river, a bridge, and dense residential buildings. The image is used as a background for the text overlays.

THANK YOU FOR YOUR ATTENTION!

VIDEO

<https://www.latarh.lv/gada-balva/2014-gada-labakie/>

DR. ARCH. JANA JAKOBSONE, HEAD OF CONSTRUCTION DIVISION
JANA.JAKOBSONE@KULDIGA.LV